



2 TO 8 OF JUNE 2025
**TEAM LEADERS
GUIDEBOOK**



Dear Team Leaders

Ponte de Lima, May 28th 2025

The Organization committee of the 2025 ECA Canoe Marathon European Championships has the pleasure of welcoming you once again to Portugal and to Ponte de Lima, the 1000 years old village and home of some of the greatest Canoeist in the world.

We are very excited to be hosting these championships once again in the centre of this beautiful village with the old roman bridge as main scenery for this event.

We have been working hard to host a great and environmentally conscious championships, and with your help we will archive this goal.

We have also prepared a very nice, calm and nature environment area for all of you participating in this competition. Enjoy the nature, enjoy the great Portuguese weather. Embrace the city of Ponte de Lima, canoeing runs in its veins, and most of the population have already had some kind of contact with canoeing and it will be a great pleasure to all of them to attend this magnificent event.

The following document will summarize the most important information for all nation teams participating.

Please do not hesitate to contact us if you have further questions.

Welcome!!



Ricardo Machado
FPC President



Vasco Ferraz
Mayor of Ponte de Lima



Ernesto Morais
Nautical Club President

Participating Nations

BELGIUM

CZECHIA

DENMARK

ESTONIA

FINLAND

FRANCE

GEORGIA

GERMANY

GREAT BRITAIN

HUNGARY

IRELAND

ITALY

KOSOVO

LUXEMBOURG

MOLDOVA

NETHERLANDS

NORWAY

POLAND

PORTUGAL

ROMANIA

SERBIA

SLOVAKIA

SLOVENIA

SPAIN

SWEDEN

UKRAINE

**INDIVIDUAL
NEUTRAL ATHLETES**



Officials and Jury

Jury



Jury President
Stien Verlinden
BEL



Jury Member
Geir Kvillum
NOR



Jury Member
Ricardo Machado
POR



ECA Sport and
Event Manager
Jovana Stanojevic



ECA Staff
Ivana Sundov

HOC



Event Directors
Sérgio Ferreira
& Ernesto Morais



Project Manager
Marcos Oliveira



Chief Course Umpire -
Competition Committee
Brian Chapman



ECA Marathon Committee
& Deputy Chief Official -
Canoe Marathon Committee
Anastasia Sergeeva



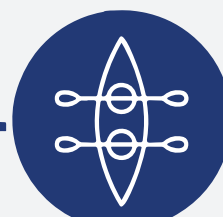
ECA Canoe Marathon
Technical Chair &
Chief Official
Ruud Heijselaar



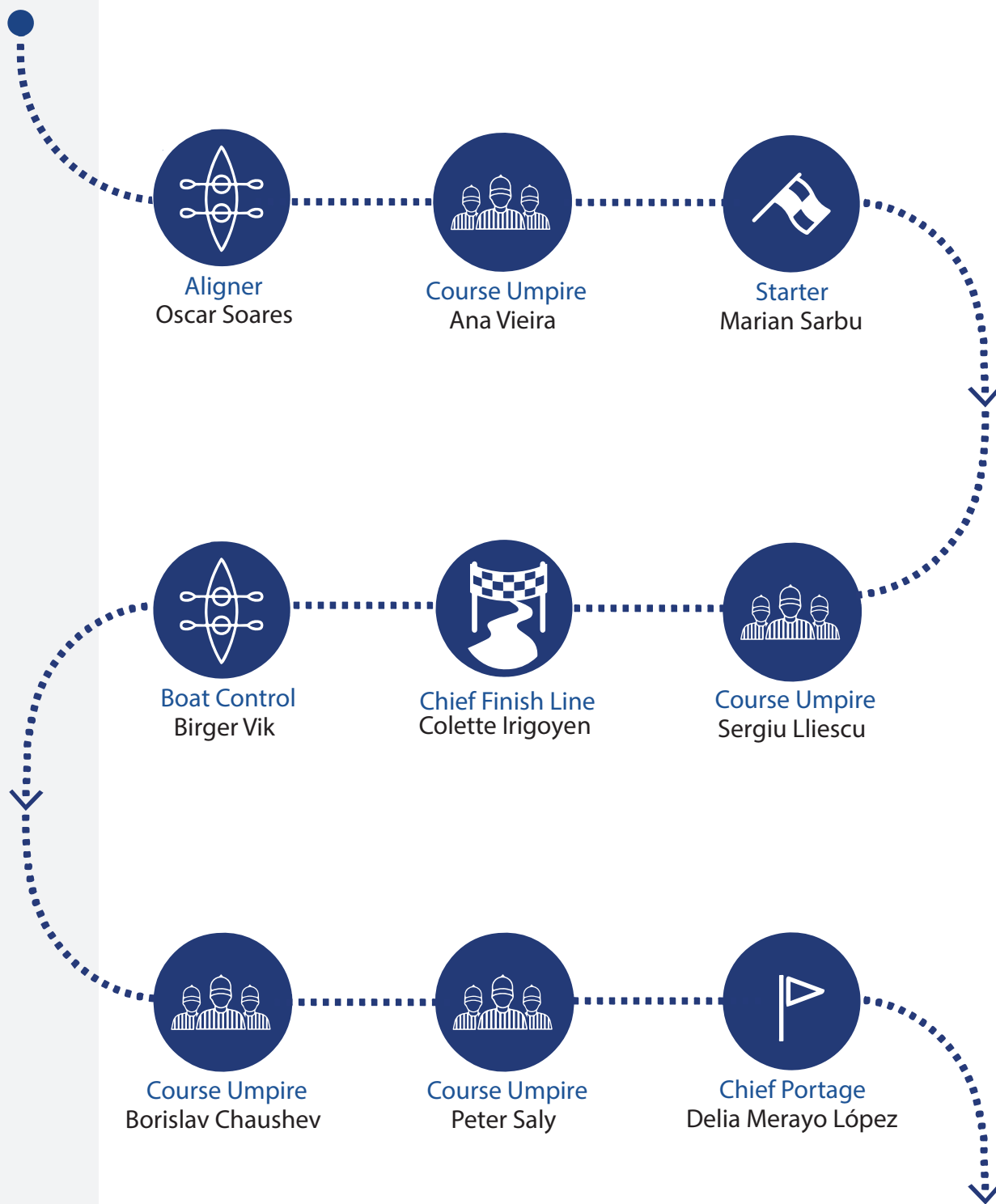
Safety Officer/
Masters Deputy CO -
Competition Committee
Edwige Bakkaus



Course Umpire/
Chief Finish Line Masters
Anne Fjedvig



Raft Marshal
Elly Onnekes



ICF Paracanoe





Program

All information about the championships can be reach at canoemarathonportugal.com, as well as canoe-europe.org.

Official Facebook pages for Canoe Marathon Portugal and Canoe Europe will also be used for social shares about the championships.

All documents related to the championships management can be found at the official ECA timing & Scoring provider, MEMOSOFT at memosoft.spotfokus.com. Direct link in the QR code below.

No start list will be published in paper at the venue. Same for results.


Team leaders meeting will happen on Wednesday, June 4th at 11:00 at the Nautical Ponte de Lima Club, located in the opposite side of the venue.

One Boat will take all team leaders from the venue to the club facilities at 10:30.

Only the Team Leader of each Nation will be eligible to attend the team leaders meeting. This meeting is also including paracanoe Information.

Startlist & Results





Program

(continues from previous page)

Opening ceremony, Wednesday June 4th at 17:30.

It will be held at the main square of the village.

There will be a small parade of teams, from Team's area to the main square. All nations are required to attend this event and participate in the parade. Meeting point will be accreditation centre main entrance at 16:45.

Please wear your national team uniforms.

After the ceremony, that will take around 30 minutes, all team leaders are invited to attend a wine tasting experience.

There will be a special BUS from the venue to hotels at 19:00.

There will be not team leaders' dinner in the official program of the championships.

Closing ceremony, will take place in the podium area and starts before the last medal award ceremony, around 16:45.

Sunday, there is a official farewell dinner at the venue, for all teams. No dinner will be served at hotels on this day.

A Special BUS will be prepared around 20:30 to return to the hotels.



Getting there & PARKING



To arrive to the venue, signs to the Europeans must be followed.

Coming from the A3 Highway, follow the main road to Ponte de Lima and take a right, near the gas station and the Lidl Supermarket. Other signs to be followed are the ones saying "ExpoLima"

All vehicles must be parked in public parking around the village. The best one would be the one on the side to the pavilion. Parking is free of charging

Accreditation Centre

Located in the heart of ExpoLima (the main facilities of this venue), accreditation centre is right inside the pavilion.

Access is limited to team leaders. Athletes, and other team's staff will only be authorized by request of our staff. This will happen when we need to take personal pictures for the accreditation process.

There will be a ticket waiting system, to avoid confusion. Upon arrival to the centre take your ticket and wait. There will be 3 tickets tolerance.

When your number is called you should first confirm with accounting the payment situation of your team.

After this process you will confirm your nominal list of persons and get the accreditation badges for all members of your team as long as the rest of items of your team leaders pack:

- Bib numbers
- Safety pins
- Boat Stickers

During the accreditation process you should be alone. All accompanies should be outside this area.

In case late team leader arrival, that person can be replaced by other team staff, with accreditation in the ICF SDP system.

Payments of invoices can be made upon arrival in cash or debit/credit card. (taxes will apply when using credit cards). **PAYMENTS IN EUROS ONLY.**

Opening Hours

Every day from 2/06 to 8/10
from 08:00-12:30 and from
14:00-19:00.

WhatsApp Team leader Group

There will be a Team leader WhatsApp group where relevant information will be posted for team leaders only.

Please make sure to be given access to this group in the Accreditation centre.

QR Code also available to scan and have direct access.





Breakfast, Lunch & Dinner

Breakfast will be served at the hotel, from 7:00 everyday.

Lunch will be served at the venue restaurant, from 11:30 to 14:30. Lunch is included with participation fee package.

Accreditation badge is mandatory to access the restaurant. Barcode scanning system will be used.

Daily meal menus will be found outside the restaurant. Fish and meat dishes available daily. Vegetarian available upon previous request.

Only teams that booked accommodation through OC will have lunch included.

Dinner will be served at the venue restaurant from 18:30 to 20:30 every day for teams that booked accommodation through OC.

Teams staying in Viana do Castelo will have dinner at hotel.

Teams in Viana Axis will have dinner at hotel restaurant. Teams staying in Hotel do Parque will have dinner at D. Prior Restaurant (very close to hotel). Accreditation badges are needed to be presented.

Dinners are available from 19:00 to 20:30 daily.

Free water and bottles

Each participant can collect his/her water bottle to fill with water at the info point. Several water fountains will be available around the venue.

**Ponte
de
Lima**





There are only 2 ways to get inside the team's area, one is from the main entrance, on the side of the accreditation centre and the second one is the water access on the corner & bottom of the facilities. To enter in both places, accreditation badge is mandatory.

Teams area will open on Tuesday June 3 for National Federations from at 7:00 and closes at 20:00. Same schedule for all days until Sunday 8 of June.

Team's Cabins

Each Nations will have a cabin with some private space. Small teams will share this space with other countries. Cabins will be open, please don't leave important object inside during the day/night. OC will not be responsible for any object left unsecured.

Some of the cabins have private toilet and shower. All cabins will be equipped with table and a couple of chairs.

The 36 Cabins will be identified with the country at the entrance. Also some outdoor tables and chairs will be in place, please feel free to use them, but don't move them from those places.

1	BELGIUM
2	CZECHIA
3	DENMARK
4	DENMARK
5	FRANCE
6	FRANCE
7	GERMANY
8	GERMANY
9	GERMANY
10	GREAT BRITAIN
11	GREAT BRITAIN
12	GREAT BRITAIN
13	HUNGARY
14	HUNGARY
15	HUNGARY
16	HUNGARY
17	IRELAND
18	ITALY
19	ITALY
20	NETHERLANDS
21	NORWAY
22	POLAND
23	PORTUGAL
24	PORTUGAL
25	PORTUGAL
26	PORTUGAL
27	ROMANIA
28	SPAIN
29	SPAIN
30	SPAIN
31	SPAIN
32	SWEDEN
33	UKRAINE
34	TIP
35	Paracanoe (GEO,LUX) & AIN
36	Medical centre



Boat Storage

Boats storage will be available at the venue. The racks will be available in first come, first served basis.

Trailers can also be placed inside the Team's area. To enter, please ask for the opening of the gates at the

accreditation centre.

Gates can only be opening from 30/05 to 9/06 between 8:00 and 19:00.

ALL trailers must be parked aligned to the limit of the area, and under supervision of our organization.

Toilets and Showers

Special paracanoe portable toilets are provided near Cabins. They can be used by others, with priority to paracanoe athletes.

Showers and other toilets are provided near the main entrance.





Boat Repair and Service

NELO and ELIO will be inside team's area to provide these services.

Bike Rental

There will be a Bike rental service inside team's area.

This service is exclusive for national team members

Info Desk/Point

Placed near team's cabins this is where you can get the first contact with our organization. All general questions should be asked there first.

It will be open one hour before first race of each day and closed 1 hour after the last race of the day.

It will be opened during lunch breaks.

Start lists and results in paper can be requested here.

Price Table

1 day	20 euros
2 days	30 euros
3 days	40 euros
4 days	45 euros
5 days	50 euros
6 days	55 euros
7 days	60 euros

Mandatory Deposit per Bike
100 euros



ID/Water Access & Raftmarshall

Outside Team's area there is one controlled access area where you can find the ID control/raftmarshall.

The access to the water is made by plastic pontoon, with wood ramp, specially designed for paracanoe wheelchair.

Access to this area is only for persons with accreditation badge.

Some cold-water showers can also be found at this location.

This will be the area to embark and disembark from water for Training or racing.

GPS and on board cameras will be provided to participants also in this area, before the ID Control/ Raftmarshall.

Portage

The access to the helpers zone inside the portage is done near the first white container, near the portage exit.

The path between the team's area and this access is to be done along the public zones. More information about portage below in this document, inside sports info topic. Special vests will be provided to each helper.

TRANSPORT and Shuttle System

There will be only one line for all transport system and to be used only for Viana do Castelo Hotels. Shuttles will start from Axis do Parque, followed by Hotel Axis.

Shuttle system timetable to be published at canoemarathonportugal.com

Pickup and drop off area at the venue is on the side of accreditation Centre. All pickups and drop offs will also be made in front of each hotel. For Axis Viana, please go to the roundabout below the hotel. Detailed picture below.



Departure information for each team should be checked from June 5th at the Transportation centre, on the first floor of the pavilion. This should be done by each Team Leader.

Transportation departure will inform each team leader about pickup time for each team, at least 24h before the departure day.

For other Hotels in Ponte de Lima please come to the transportation department as we will build custom transportation services for your team.



VIP AREA

The VIP tent will be opened to all NF presidents and Secretary generals, Jury, ECA personnel and Portuguese Canoe Federation Board members and selected guests.

Vip tent will operate from June 6th to June 8th and opens 30 minutes before the first race of each day and closes one hour after the last race of each day

Health and Safety

We have safety boats on the water and an emergency team situated by the portage.

The Organizing Committee is not responsible for covering your expenses in connection with hospital treatment, dental treatment, or any other medical treatment not offered at the venue.

Training

Training will be available from Wednesday June 4th from 7:00 - 14:30 for those with accreditation. No training on the regatta course during master races, paracanoe and Elite races.

Access to training should be done from the same area as ID control/ Raftmarshall.

BOAT CONTROL

-There will be a boat control for the first 4 boats after each race.

-Boats will arrive at designated areas, one after the other.

-The athlete will take the boat to boat-control with the help of volunteers.

-The ITOs will check the boats and equipment and then give the OK to the athletes to take boats back to the water to exit in same place as ID. During this process athletes may be asked to do a quick flash interview.

-OC Staff will remove GPS and on board cameras hardware after the boats are weighed.



Internet

Two different wifi networks will be available to all participants and public. Wifi4U, which is a permanent free connection provided by the city council and other one installed for the Event that will be called **Plima2025-Teams**. Password for that network is **Canoemarathonisgreat#2025**

Sport Information

Nation and name stickers

It is mandatory to have nation stickers on every boat. Boat stickers will be provided by the organisation and given at the accreditation.

They should be placed in both sides on the front of each boat.

Name stickers are not mandatory, If used they must follow the ICF guidelines.

Bibs

Bibs will be provided by the OC for each participant. They must be worn on the back and fixed with baby pins, all provided by the Organization at the accreditation centre.

In case of loss of one BIB, the team leader must go to the Chief Official and ask for a replacement.

Bibs will include the Personal ID number, Country and first letter of the participant plus his/her family name.

Raft Marshall/ID Control

Raft Marshall will open 30 minutes before each race group. Barcode scanning system will be in use, so all athletes are requested to bring their accreditation. Badges can be left at this point and be collected later by the Team leader.

Boat numbers will also be given at this point, and applied by volunteers to the boat. Boat numbers must be returned after each race at the same pontoon. Volunteers will collect all numbers.

Start Procedure

All classes start positions have been completed by random draw and you will find the draw positions on the website upon arrival. The draw positions are numbered from the left facing in the direction of the course. Boats will line up in a numerical order. Launching on to the water will only be from the indicated rafts and this will be a controlled area, the officials will check each person's boat on to the water. The boat must be in an undamaged state. Paddlers will only be allowed onto the water with their correct boat and must also be correctly attired in their National dress.

Warm up area for all races in that session is near the portage entrance area and behind the bridge.

ALL BOATS RACING HAVE TO BE ON THE WATER WELL BEFORE THEIR START TIME. THE STARTER WILL NOT WAIT FOR LATE PADDLERS.

The starter will call the paddlers to the start line. Please ensure that paddlers approach their starting point as quickly as possible in order that the starts may commence on time.

The starter commands will be clearly heard by all the competitors through loudspeakers placed along the start pontoon.

All his commands will be in English, and the start command will be **READY - GO**

Finish and Post Race Boat Control

Timing and race results will be dealt at the finish tower and access to this area will only be available to the Competition Committee and main event officials.

Video finish equipment is installed and will be used where applicable. **The finish Line is only between two red buoys with red flag.**

After the finish, all competitors must continue downstream and paddle around the island and disembark at the same place where they enter before their race (see map), exception for the first 3 boats. Those should disembark a few meters after the finish line into their left. During this period, they might be called for some Flash interviews.

Finish Area

Paddlers should clear the finish area as soon as possible and must not, under any circumstances, cross the finish line twice. A marshal will indicate when it is safe to pass across the course as to not interfere with boats who are still on the course.

During the first two passages at the finish lane area(no portage laps), it will not be allowed to pass between the two red buoys.

Course Details

Long distance

There is an initial short half lap anticlockwise around TP1 and back to the bridge in the start area (shown in yellow on the map below). There is no portage at the end of this half lap. From here the normal laps anticlockwise

around TP2 and TP1 (shown in purple on the map below) will commence. There will no portage at the end of the first normal lap. After the designated number of normal laps and portages the paddlers will do a small lap anticlockwise around TP3 (shown in red on the map below) and finish between the red buoys at the finish line.

Any lapped paddlers passing by TP1 on their way to TP1 must keep clear of paddlers turning round TP3 on their way to the finish.

Short Distance

There is an initial short half lap anticlockwise around TP1, followed by portage after passing the old bridge, then around the island and back to the bridge in the start area (shown in yellow on the map below).

Keep in mind TP1 and TP2 in short lap are not the same positions as long distance. This buoys will be colored in yellow.

Then a second passage on the portage, after turning in TP1 for the second time, followed by turn around TP3(same location as long distance), and all the way to the finish line between the two red buoys with flag.

Map of the course can be found at the official website of the event at canoemarathonportugal.com and attached to this handbook. Disembarkation and embarkation is on pontoons, at the competitors area, approximately 200 metre from the start line.

Organizing committee also provided virtual animations of the short and long-distance course. They can be found at the official Facebook page of the event here facebook.com/canoemarathonportugal with the athletes and their paddles.



Portage

There is a beach Disembarkation. The running distance of the portage is about 90 metres with a beach embarkation. Feeding area approximately 40 meters long. Portage floor will be partial painted to define the limits of feeding and direction with arrows.

Only a maximum of **ONE** helper per team, as previously indicated will be allowed to feed paddlers and these must be in possession of an accreditation card. Helpers are only allowed to support in races where their paddlers compete.

Nation vests will be given to each helper. Accreditation badge will be deposited until the return of the vest to the ITO/NTO in control.

If two boats in the race only 1 helper is allowed to give support.

None of the helpers are allowed to enter the non-feeding area. There will be a corridor for helpers who have to go to the helper's area, no other crosses at other places are allowed. White marks will be painted in the grass to inform where are those limits.

With competitors running at high speed, with canoes on their shoulders, with restricted vision it is important for safety that the marshal's instructions are obeyed.

Due to the high number of paddlers, the marshals who are in control of the portage area, will be strict and will only allow you into the feeding area if you are supporting your paddler. Marshals will be instructed to ask other team officials to stay behind the barriers. Helpers should not stop suddenly after helping their paddler as there may well be another boat coming behind them and the paddler of this second boat may not see you. Go to the end of the feeding lane and return to the beginning by the third lane provided.

Liquid bags

It is strictly prohibited to throw away liquid bags and other trash in the river. Make sure to get rid of your trash on the portage. If this rule is not being followed, you will be given a 30 second penalty.

Doping control

To be done in accordance with ICF regulations, and any clarification of the procedure will be given at the team leaders meeting.

A random selection of at least one paddler from each of the first four places will be required to attend doping control and will be accompanied by a team official and an event organising official.

Competitors must bring their ID cards with them. Please therefore ensure that all paddlers have their ID cards at the finish area to ensure that there is no delay. The control will take place inside the main pavilion. Notice will be given to the team leader if a competitor is required to attend doping control.

ADEL Certification

CAM Rules 1.10.3 - Athletes and support personnel, entered in any ICF competition or continental championships must complete the ICF's anti-doping education programme or equivalent before competing or risk being denied entry to the competition.

Education - Article 17

The ICF shall plan, implement, evaluate and promote Education in line with the requirements of Article 18.2 of the Code and the International Standard for Education.

17.1 Athletes entered in any ICF competition or continental championships must complete the ICF's anti-doping Education programme or equivalent before competing, failing which they may be denied entry to the competition.

17.2 All Athlete Support Personnel accredited in any ICF competition or

continental championships must complete the ICF's anti-doping Education programme or equivalent before participating, failing which they may be denied their accreditation to the competition.

Athlete Support Personnel: Any coach, trainer, manager, agent, team staff, official, medical, paramedical personnel, parent or any other Person working with, treating or assisting an Athlete participating in or preparing for sports Competition.

The main criteria of being an Athlete Support Personnel (ASP) is **working with, treating or assisting an Athlete participating in or preparing for sports Competition.**

<https://adel.wada-ama.org/learn>

Sport Presentation

Green room

The organization committee will photograph all participants, using green screen technology. The goal is to present all paddlers during the race, in the tv graphics. The main beneficiaries of this presentation will be the athletes, so please inform them and encourage them to participate. It takes 10 second to do. If possible, they should be wearing the official uniform of the country.

There will be no video recording, only a still picture.

The green room is located in one corner of the accreditation centre and it will work from 09:00-12:30 and from 14:00- 18:00 from June 3 to 7 of June.

STREAMING

The organizing committee will broadcast all races from June 5 to 8.

It will be live at Canoe Europe Youtube channel and also Canoe Portugal Facebook page, free of charge

As addition we will provide a multiscreen viewer website, where everyone can also see the general streaming production but also follow on board cameras of specific boats competing in each race.

This will be a world premiere, and we are sure it will change the way we all see our sport and discipline.

We kindly ask all your athletes that are selected to get one of these cameras on his/her boat to allow it, for the good sake of the sport. This will be done at ID/ Raft Marshall together with the GPS. The total extra weight is around 300 grams and this will be considered at the post race boat control. Our staff will be in charge for installation and remove of the camera. If your athlete had one camera in his/her boat, please after the finish, exit at post race boat control even if you are not in top 3.

Medal Ceremony

The presentation will be done near the old bridge, near the 2nd boat control , behind the portage. All competitors who receive medals must be present 15 minutes before the scheduled time at the medal ceremony container. Again, accreditation badge mandatory to enter this area.

The procedure will be as follows:

All competitors who are to receive medals should assemble at the medal ceremony Container. The medal winners will be led to the podium. In front of them will be three volunteers with the medals on a plate, then behind them, the team leader of the winning national country, and finally the head of the delegation.

The event will be announced, the athletes and officials will march on to the prize giving area.

The medals will be presented and accompanied by the head of the delegation of the gold medal winners.

Please ensure that all paddlers receiving medals are wearing full national track suits, no hats and no sunglasses and no flags.

The medal presentation ceremony will take place in a restricted area. Only the medal-winning athletes and the presenting official will have access to the area.

Medals engraving

All medals will be engraved before the medal's ceremony. Name of the padders will be written in each medal.



RULES

The team leader will:

9.2.1.b Be the main contact with the Chief Official and the HOC throughout the competition.

9.2.1.c Arrange to submit the protest or appeal as stipulated if necessary.

T12.8 Paddling on the course

12.8.1 - Athlete must not wash riding an athlete in another class.

12.8.2 - Wash riding on an athlete in another class is a violation of the racing rules and will be subject to a penalty. If an athlete is observed to be wash riding the athlete will receive a first warning and a time penalty of 30 seconds. If the athlete receives a second warning or has

gained major advantage, then he/she will be disqualified (DSQ) from the race.

12.8.3 - Athletes who have been lapped will end their race at the most suitable time and location and as soon as possible after the race leader has passed the last portage. The normal location for ending a lapped paddlers race will be at the portage. They will be recorded in the place they are at that point in the race.

10.12.1 DISQUALIFICATIONS AND PENALTIES

Any athlete who attempts to compete in a race by any other than honourable means or who breaks the racing rules, or who disregards the honourable nature of the racing rules will be penalised or disqualified for the duration of the race concerned.

10.12.2 - Should an athlete have failed to follow the correct course of the race (for example missed a turning buoy) the athlete has broken the racing rules and will be subject to a penalty:

10.12.2.a If the Race Umpire believes the athlete has gained a small advantage on other athletes: Time penalty of 15 seconds will be given;

10.12.2.b If the athlete has gained a major advantage a disqualification (DSQ) will be imposed;

10.12.2.c Should a buoy be missed as a result of a collision in group racing during a turn this will be investigated and the boat that caused the collision will be disqualified (DSQ), see article 10.12.3. The athlete who missed the buoy due to collision will not be penalized.

10.12.3 - Collision or damage:

10.12.3.a Any athlete who is considered by a Course Umpire or Race Official to have been responsible for a collision, or who damages the canoe or kayak or paddle of another athlete or unnecessarily deviates from the direct racing line or deliberately blocks the path of an athlete may be penalized or disqualified;

10.12.3.b A collision will be considered to be an event where an athlete's boat or paddle touches another athlete's boat or paddle in a way that disadvantages another athlete;

10.12.3.c If it is considered that other paddlers have only had some minor disadvantage compare to other athletes as a result of the incident the responsible athlete will get a time penalty of 30 seconds;

10.12.3.d If it is considered that the incident has given other paddlers a major unfair disadvantage the penalty will be disqualification (DSQ).

10.12.6.b Time penalties must be executed in a designated area at the portage and supervised by a Race Official or will be added to the athletes finishing time if a time penalty stop is not used in the competitions;

10.12.3.c Disqualifications are decided by the Competition Committee and are subject to an appeals.

10.12.7 All penalties or disqualifications must be confirmed by the Competition Committee in writing immediately, giving the reasons. The Team Leader of the athlete/team must acknowledge the receipt on the notice copy with the exact time, which marks the start of the protest time.

10.12.8 If an athlete is observed by an International Official to throw a drink bag into the water, they will receive a 30 second penalty. The decision is to be confirmed by the Chief Course Umpire and cannot be the subject of an appeal.

Implementation

Competitors must not dispose of their drink bags or small plastic energy syrup packets while on the water or on the portage pontoons and ramps. Drink bags and small plastic energy syrup packets must be discarded only on the portage anywhere between the pontoons/ramps.

10.12.6 - Handling of penalties:

10.12.6.a Time penalties as decided by the Chief Course Umpire are not subject to appeal;



PENALTIES

-Penalties that are incurred during the race will be imposed at the portage in the penalty box or added to the competitors time if not possible to be taken during the competition.

-In short distance the penalty will be add at the racing time.

-A **yellow flag** will be displayed in the beginning of the portage area when a penalty has been imposed

There will be a **notice board** at the beginning of the portage indicating which boat number has been given a penalty and the length of the penalty. It is the paddlers responsibility to check the penalty board.

The penalised competitor will be required to stop in the penalty box for the designated period at that portage. The penalty box will be at the end of the portage on the right-hand side. A timing clock is at the penalty box indicating the penalty time.

APPEAL

12.9.1 - Team Leaders or other NF representatives have the right to appeal to the Jury against a decision of the Competition Committee on behalf of their athletes.

12.9.2 - The appeal must be handed to the Chair of the Jury in writing with reasons, not later than 20 minutes after the Team Leader has been informed with a written communication of the decision against the athlete or team and has signed the receipt given.

12.9.3 - An appeal must be accompanied by a fee of 75 Euros (or an equal sum in the local currency). The fee will be refunded if the appeal is upheld.

12.9.4 - On receipt of the appeal, the Chair of the Jury must advise the relevant Team Leader and indicate arrangements for hearing the appeal.

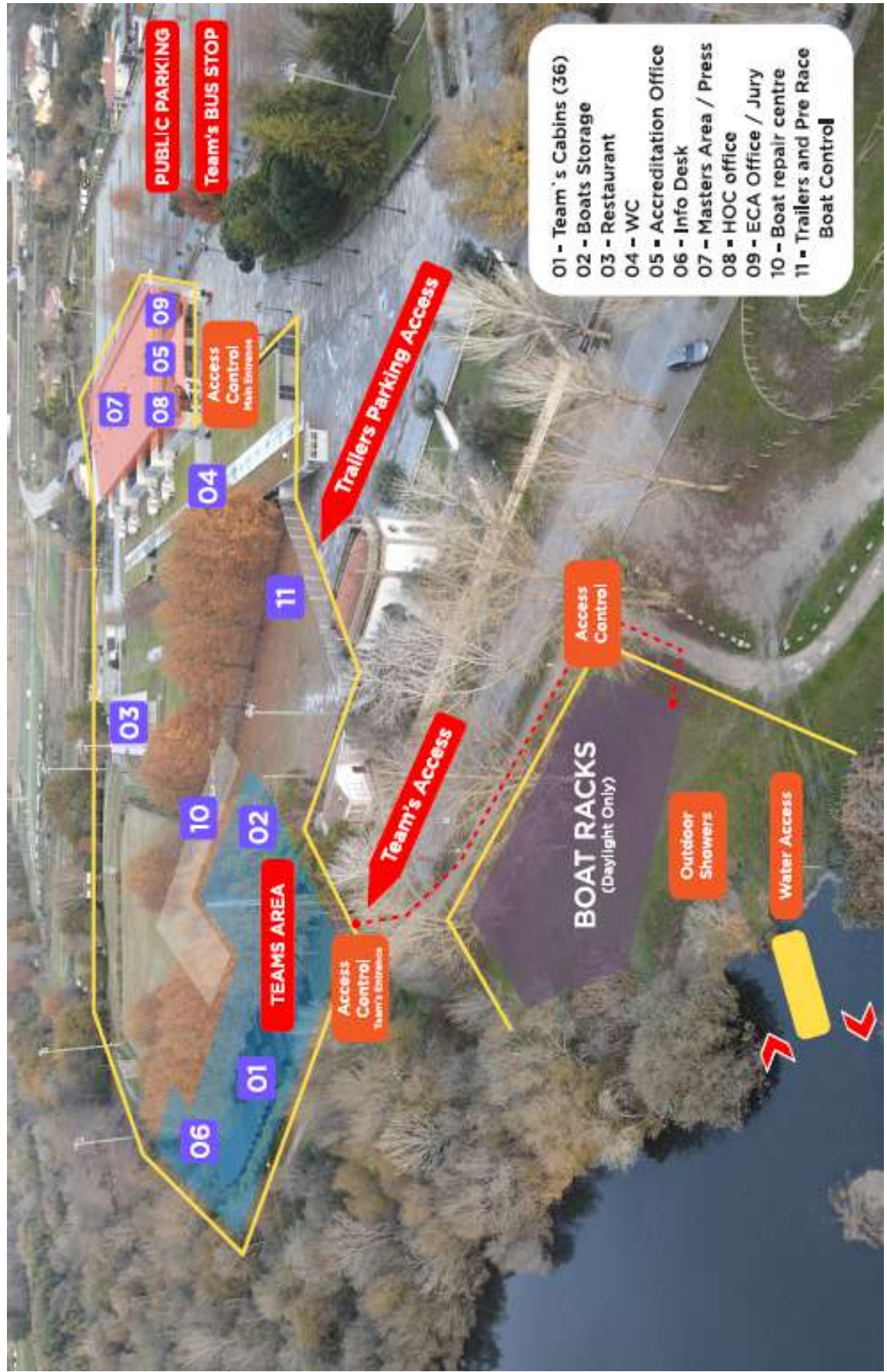
12.9.5 - The appeal must be heard as soon as possible. Witnesses may be called.

12.9.6 - The decision of the Jury is final.

12.9.7 - Final results should be prepared, and medals and trophies presented after the Jury's decision is announced or the time limit for appeals to the Jury has expired (whichever is the latter).

Attachments on the next pages

Attachments



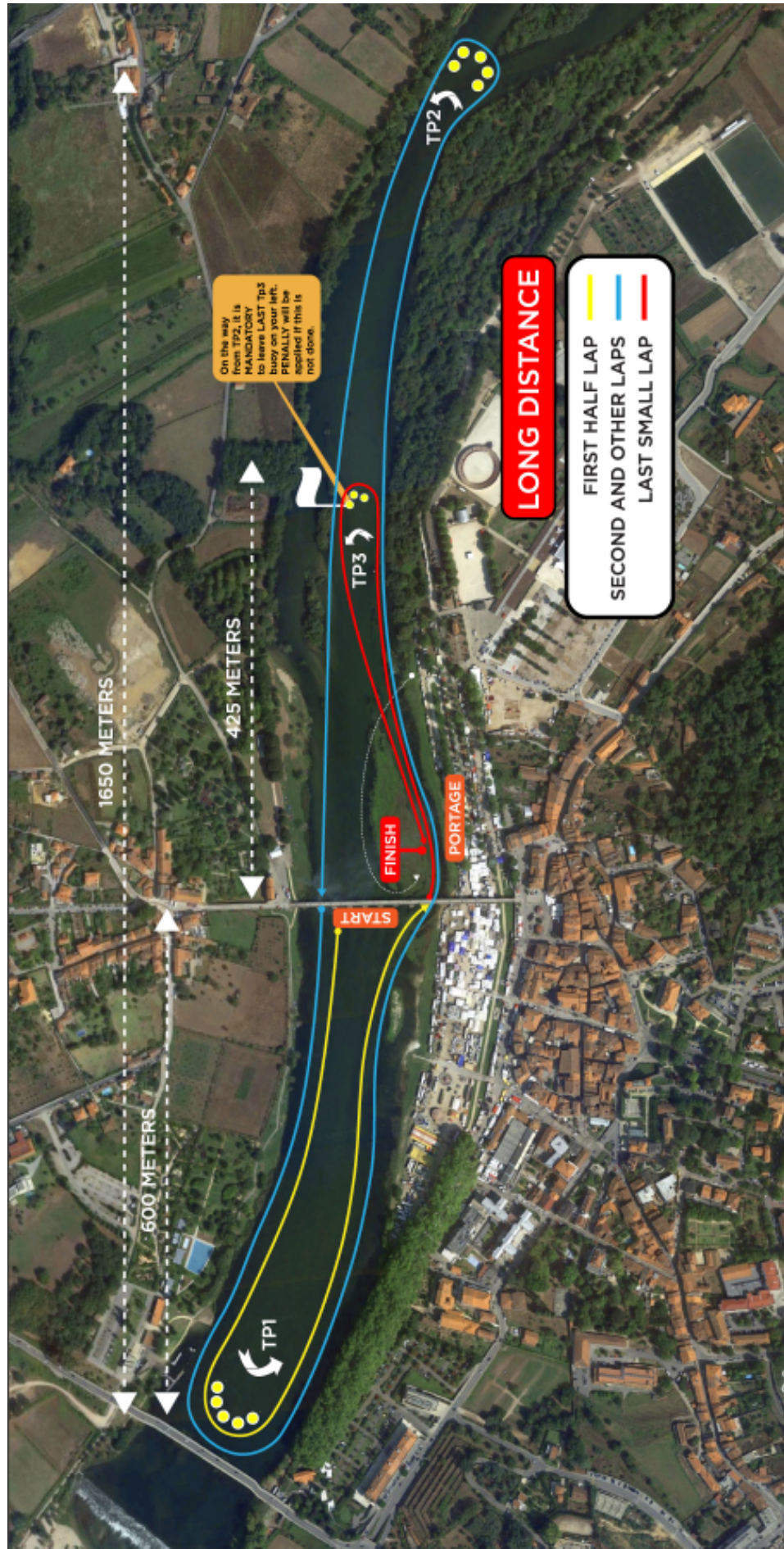
Attachments



Attachments



Attachments



Shuttles Hotel do Parque

	SHUTTLE FROM HOTEL				
	04/jun	05/jun	06/jun	07/jun	08/jun
Hotel do Parque	08:00	06:45	06:45	06:45	06:45
	08:30	07:15	07:15	07:15	07:15
	09:15	08:00	08:00	08:00	08:00
	09:45	08:30	08:30	08:30	08:30
	10:30	10:30	10:30	10:30	10:30
	11:30	11:30	11:30	11:30	11:30
	14:15	14:45	14:45	14:45	14:45
	14:45	15:15	15:15	15:15	15:15
	15:45				
	16:15				

	SHUTTLE FROM VENUE				
	04/jun	05/jun	06/jun	07/jun	08/jun
Hotel do Parque	09:45	09:45	09:45	09:45	09:45
	10:45	10:45	10:45	10:45	10:45
	13:30	14:00	14:00	14:00	14:00
	14:00	14:30	14:30	14:30	14:30
	15:00	15:30	15:30	15:30	15:30
	LAST BUS	17:30	17:30	17:30	16:00
	AFTER	19:30	19:30	19:00	18:00
	OPPEN	20:00			
	CERIMONY				



Shuttles Hotel Axis Viana

SHUTTLE FROM HOTEL					
Hotel Axis Viana	04/jun	05/jun	06/jun	07/jun	08/jun
	08:05	06:50	06:50	06:50	06:50
	08:35	07:20	07:20	07:20	07:20
	09:20	08:05	08:05	08:05	08:05
	09:50	08:35	08:35	08:35	08:35
	10:35	10:35	10:35	10:35	10:35
	11:35	11:35	11:35	11:35	11:35
	14:20	14:50	14:50	14:50	14:50
	14:50	15:20	15:20	15:20	15:20
	15:50				
	16:20				

SHUTTLE FROM VENUE					
Hotel Axis Viana	04/jun	05/jun	06/jun	07/jun	08/jun
	09:45	09:45	09:45	09:45	09:45
	10:45	10:45	10:45	10:45	10:45
	13:30	14:00	14:00	14:00	14:00
	14:00	14:30	14:30	14:30	14:30
	15:00	15:30	15:30	15:30	15:30
	LAST BUS	17:30	17:30	17:30	16:00
	AFTER	19:30	19:30	19:00	18:00
	OPEN	20:00			
	CERIMONY				

CANOEMARATHONPORTUGAL.COM



2 TO 8 OF JUNE 2025

SHORT DISTANCE & LONG DISTANCE
SENIORS, UNDER 23 AND JUNIORS
MASTERS



Ponte de Lima



PLASTEX boats for champions

NELO

Culligan water you love